

Incident Data Exchange in NG9-1-1

Michael Smith

CTO, DSS Corp.

Theresa Briscoe

9-1-1 Communications Analyst, Cal Fire, Riverside

Introduction

- What we'll cover
 - What is an FE?
 - Incident-related Data
 - The EIDD
 - The IDE
 - Privacy, Security and Policy issues
 - Merging and Linking Incidents

Background - what is an FE?

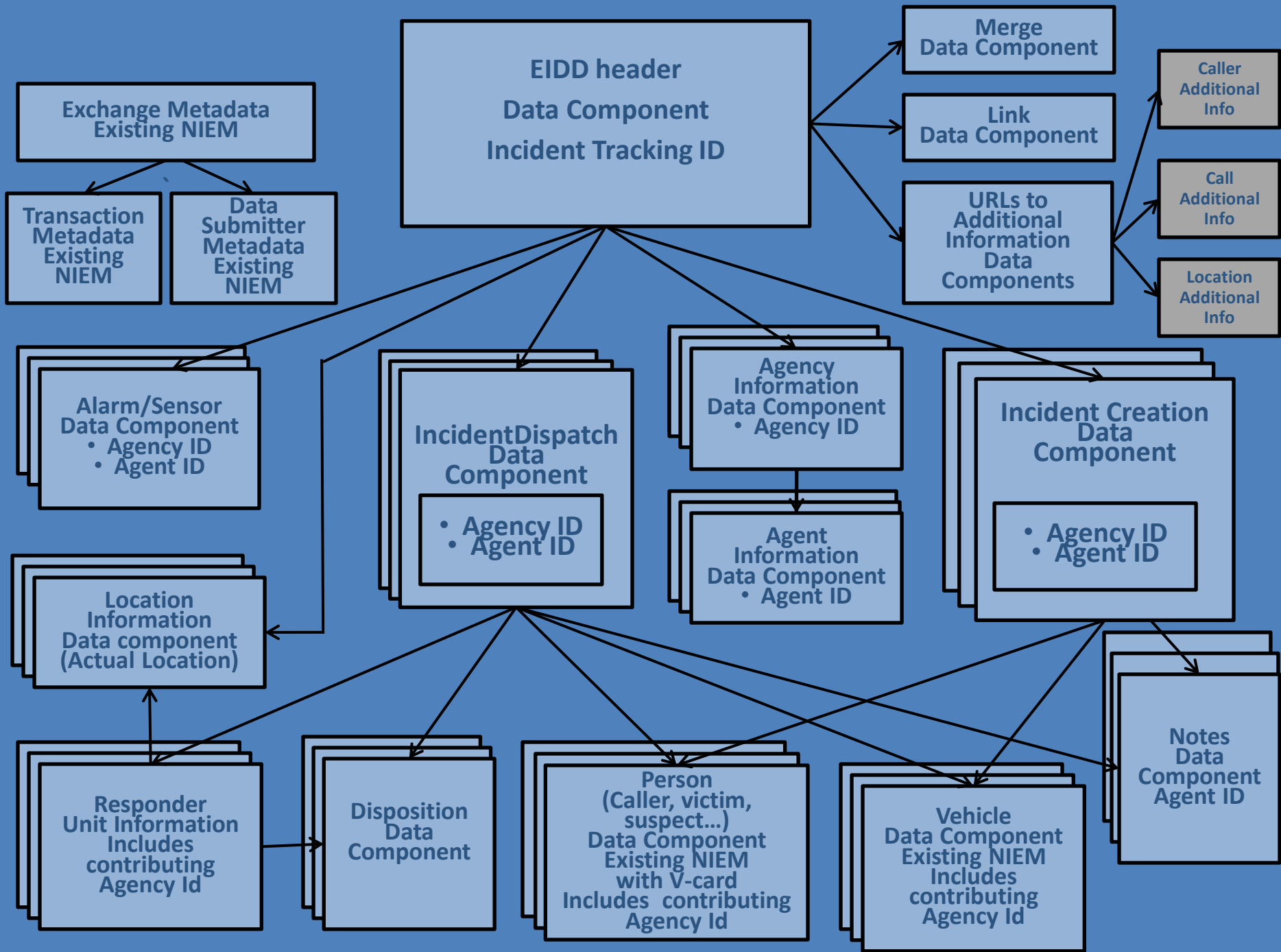
- FE = Functional Element
 - Performs some function(s)
 - Has interfaces
- Is not necessarily a system by itself

What is Incident-related data?

- Created within a PSAP or other Agency
- Might include *any* information about an incident
- But some information is critical
- We must be able to pass this information between elements and Agencies
- Need a format and mechanism

EIDD

- EIDD = Emergency Incident Data Document
- What it is
- What it's for
- Why it's needed

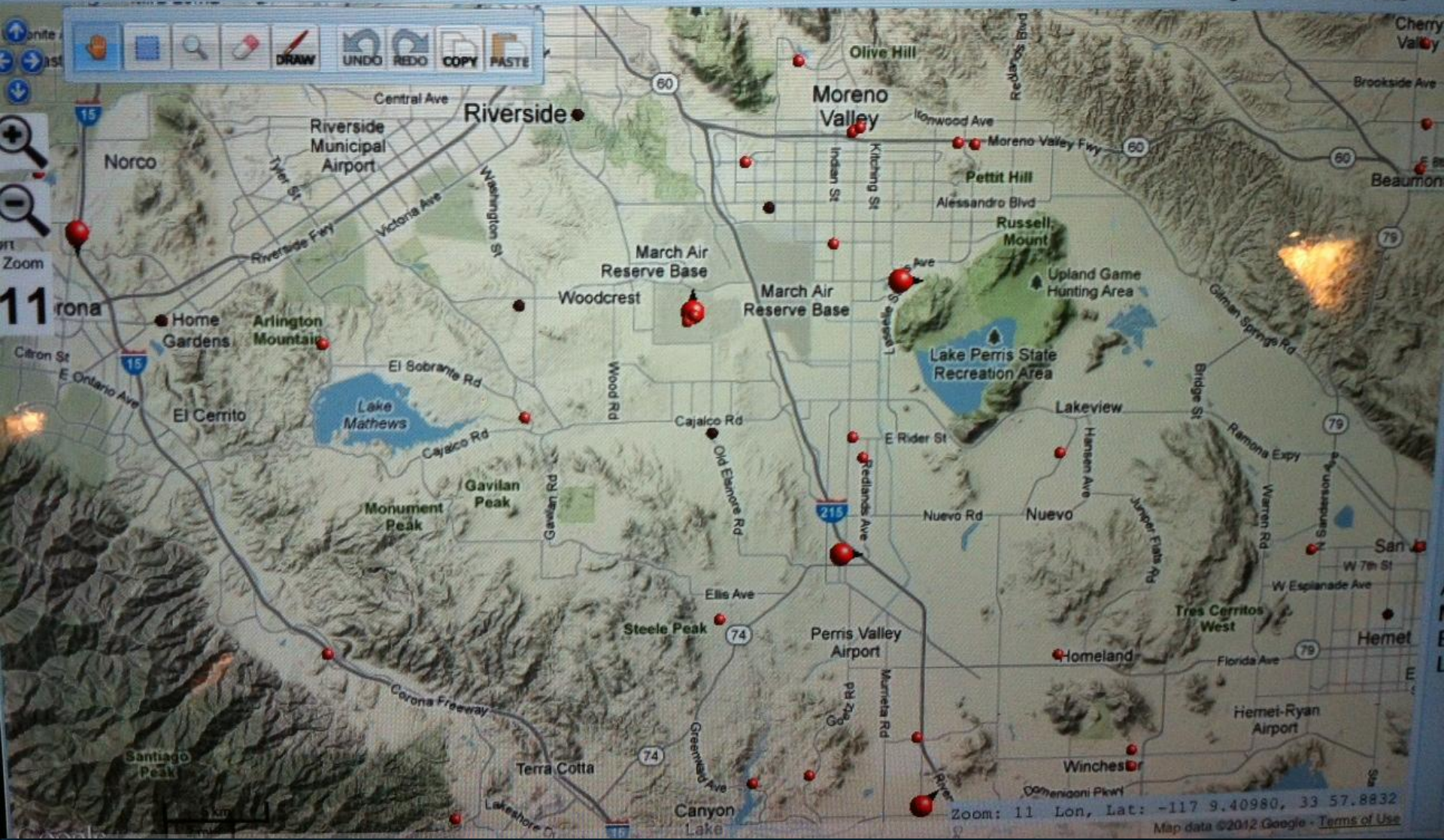


Who needs it

- Systems within an Agency
- Systems in different Agencies
- Other external entities (FEMA, DHS, FBI, ???)

Map navigation and editing tools including:

- Hand icon (pan)
- Grid icon (layers)
- Magnifying glass (search)
- Red pin icon (marker)
- Red line icon (draw)
- Undo/Redo icons
- Copy/Paste icons



An EIDD can be exchanged via two methods

- A notification EIDD, triggered by some event
- A solicited EIDD, in response to a query

Special requirements for elements that exchange EIDDs

- Every EIDD must be logged
- Must support a Subscribe-Notify mechanism
- Must support a Query-Response mechanism
- Must enforce local policy on data sent

Issues with sharing Incident data

- Privacy
- Legal
- Security
- Policy

Filtering Incident data

- Delivering a subset
- Delivering links
- Enforcing policy at time of access

IDE Functional Element

- What it is
 - Discoverable querying point
 - Provides EIDD to subscribers/requestors
- What it does
 - Filtering
 - Policy enforcement
 - Aggregated view / current state
 - Acts on behalf of other FEs
- Mechanism to deliver is TBD:
 - Web Service?
 - HTTP GET?
 - Message Switch?
 - Other methods/protocols?

Merging and Linking Incidents

- Merge vs. Link
- Done in the Logger
- Referenced in the EIDD
- Conflicts can occur – must be handled in a non-destructive way

The EIDD and NIEM

- NIEM = National Information Exchange Model
- Naming and Design Rules
- The EIDD and other NENA XML schemas will conform to NIEM
- The EIDD is usable by other entities (FEMA, DHS, FBI, etc.)

Incident Data Exchange in NG9-1-1

Questions?

FAQs

- Do I have to send Incident data to another Agency that is involved with an Incident?
- Do I have to send Incident data to a higher-level Agency?
- What happens if I don't share Incident data?
- Does my Agency have to respond to a request for Incident data?

FAQs

- If I send Incident data to another Agency, how do I know they'll treat it securely?
- Why must an EIDD be logged whenever it is sent?
- Why do we need an IDE Functional Element?

FAQs

- Do I have to do a Merge when I get other calls about an existing Incident?
- Do I have to Link Incidents that are found to be related?
- If I Merge or Link by mistake, can I undo it?